

Wydajność i klasa energetyczna		Max. długość instalacji / przewyższenie [m]	Jednostka wewnętrzna		Jednostka zewnętrzna		Cena netto zestawu (j. wewn.+ zewn. + sterownik) PLN
Moc chłodnicza / Klasa ef. energet.	Moc grzewcza / Klasa ef. energet.		Model	Cena netto PLN	Model	Cena netto PLN	



### JEDNOSTKA ŚCIENNA - DIGITAL INVERTER CLASSIC

5,0 kW / A++	5,3 / A	30 / 20	RAV-HM561KRTP-E	3 350	RAV-GV561ATP-E	5 700	9 050
6,7 kW / A+	7,0 / A	30 / 20	RAV-HM801KRTP-E	3 500	RAV-GV801ATP-E	6 900	10 400
9,5 kW / A+	10,0 / A+	30 / 30	RAV-HM1101KRTP-E	4 100	RAV-GV1101ATP-E	9 200	13 300
9,5 kW / A++	10,0 / A+	30 / 30	RAV-HM1101KRTP-E	4 100	RAV-GV1101AT8P-E (3-f)	11 400	15 500

### > NOWA LINIA "DIC" (CLASSIC)



### JEDNOSTKA ŚCIENNA - DIGITAL INVERTER

2,5 kW / A++	3,4 kW / A+	20 / 10	RAV-HM301KRTP-E	2 850	RAV-GM302ATP-E	5 300	8 150
3,6 kW / A++	4,0 kW / A+	20 / 10	RAV-HM401KRTP-E	3 000	RAV-GM402ATP-E	6 000	9 000
5,0 kW / A++	5,3 kW / A+	30 / 30	RAV-HM561KRTP-E	3 350	RAV-GM562ATP-E	7 200	10 550
6,7 kW / A++	7,7 kW / A+	50 / 30	RAV-HM801KRTP-E	3 500	RAV-GM802ATW-E <small>MADE IN POLAND</small>	8 600	12 100
8,0 kW / A++	8,6 kW / A+	50 / 30	RAV-HM901KRTP-E	3 800	RAV-GM902ATW-E <small>MADE IN POLAND</small>	9 500	13 300
9,5 kW / A++	11,2 kW / A+	50 / 30	RAV-HM1101KRTP-E	4 100	RAV-GM1102ATW-E <small>MADE IN POLAND</small>	12 700	16 800
9,5 kW / A++	11,2 kW / A+	50 / 30	RAV-HM1101KRTP-E	4 100	RAV-GM1102AT8W-E (3-f) <small>MADE IN POLAND</small>	15 200	19 300

### > NOWA LINIA "DI" SERII 2

### JEDNOSTKA ŚCIENNA - SUPER DIGITAL INVERTER

5,0 kW / A++	5,6 kW / A+	50 / 30	RAV-HM561KRTP-E	3 350	RAV-GP561ATW-E <small>MADE IN POLAND</small>	8 600	11 950
7,1 kW / A++	8,0 kW / A+	50 / 30	RAV-HM801KRTP-E	3 500	RAV-GP801ATW-E <small>MADE IN POLAND</small>	11 300	14 800
10,0 kW / A++	11,2 kW / A+	75 / 30	RAV-HM1101KRTP-E	4 100	RAV-GP1101AT-E	17 100	21 200
10,0 kW / A++	11,2 kW / A+	75 / 30	RAV-HM1101KRTP-E	4 100	RAV-GP1101AT8-E (3-f)	18 600	22 700



### JEDNOSTKA PODSUFITOWA - DIGITAL INVERTER

3,6 kW / A++	4,0 kW / A+++	20 / 10	RAV-HM401CTP-E	4 600	RAV-GM402ATP-E	6 000	11 300
5,0 kW / A+	5,3 kW / A+	30 / 30	RAV-HM561CTP-E	4 800	RAV-GM562ATP-E	7 200	12 700
6,9 kW / A++	7,7 kW / A+	50 / 30	RAV-HM801CTP-E	5 400	RAV-GM802ATW-E <small>MADE IN POLAND</small>	8 600	14 700
8,0 kW / A++	8,6 kW / A++	50 / 30	RAV-HM901CTP-E	6 000	RAV-GM902ATW-E <small>MADE IN POLAND</small>	9 500	16 200
9,5 kW / A++	11,2 kW / A+	50 / 30	RAV-HM1101CTP-E	6 100	RAV-GM1102ATW-E <small>MADE IN POLAND</small>	12 700	19 500
9,5 kW / A++	11,2 kW / A+	50 / 30	RAV-HM1101CTP-E	6 100	RAV-GM1102AT8W-E (3-f) <small>MADE IN POLAND</small>	15 200	22 000
12,1 kW / -	13,0 kW / -	50 / 30	RAV-HM1401CTP-E	6 800	RAV-GM1402ATW-E <small>MADE IN POLAND</small>	13 000	20 500
12,1 kW / -	13,0 kW / -	50 / 30	RAV-HM1401CTP-E	6 800	RAV-GM1402AT8W-E (3-f) <small>MADE IN POLAND</small>	15 600	23 100
14,0 kW / -	16,0 kW / -	50 / 30	RAV-HM1601CTP-E	7 200	RAV-GM1602ATW-E <small>MADE IN POLAND</small>	16 500	24 400
14,0 kW / -	16,0 kW / -	50 / 30	RAV-HM1601CTP-E	7 200	RAV-GM1602AT8W-E (3-f) <small>MADE IN POLAND</small>	18 400	26 300

### > NOWA LINIA "DI" SERII 2



### JEDNOSTKA PODSUFITOWA - SUPER DIGITAL INVERTER

5,0 kW / A++	5,6 kW / A++	50 / 30	RAV-HM561CTP-E	4 800	RAV-GP561ATW-E <small>MADE IN POLAND</small>	8 600	14 100
7,1 kW / A++	8,0 kW / A++	50 / 30	RAV-HM801CTP-E	5 400	RAV-GP801ATW-E <small>MADE IN POLAND</small>	11 300	17 400
10,0 kW / A+++	11,2 kW / A++	75 / 30	RAV-HM1101CTP-E	6 100	RAV-GP1101AT-E	17 100	23 900
10,0 kW / A++	11,2 kW / A+	75 / 30	RAV-HM1101CTP-E	6 100	RAV-GP1101AT8-E (3-f)	18 600	25 400
12,5 kW / -	14,0 kW / -	75 / 30	RAV-HM1401CTP-E	6 800	RAV-GP1401AT-E1	18 600	26 100
12,5 kW / -	14,0 kW / -	75 / 30	RAV-HM1401CTP-E	6 800	RAV-GP1401AT8-E (3-f)	19 200	26 700
14,0 kW / -	16,0 kW / -	75 / 30	RAV-HM1601CTP-E	7 200	RAV-GP1601AT8-E (3-f)	21 800	29 700

Wydajność i klasa energetyczna		Max. długość instalacji / przewyższenie [m]	Jednostka wewnętrzna		Jednostka zewnętrzna		Cena netto zestawu (j. wewn.+ zewn. + sterownik) PLN
Moc chłodnicza / Klasa ef. energet.	Moc grzewcza / Klasa ef. energet.		Model	Cena netto PLN	Model	Cena netto PLN	

> NOWA LINIA "KASETONOWA 1.DR"



JEDNOSTKA KASETONOWA 1.DR. 990X450X150 (1220X530) - DIGITAL INVERTER

> NOWA LINIA "DI" SERII 2

2,5 kW / A++	3,4 kW / A++	20/10	RAV-HM301U1TP-E*)	7 000	RAV-GM302ATP-E	5 300	13 000
3,6 kW / A+	4,0 kW / A+	20/10	RAV-HM401U1TP-E*)	7 100	RAV-GM402ATP-E	6 000	13 800



JEDNOSTKA KASETONOWA 840x840 (950x950) - DIGITAL INVERTER CLASSIC

> NOWA LINIA "DIC" (CLASSIC)

5,0 kW / A++	5,3 / A+	30 / 20	RAV-HM561UTP-E	5 900	RAV-GV561ATP-E	5 700	12 300
6,7 kW / A+	7,0 / A+	30 / 20	RAV-HM801UTP-E	6 000	RAV-GV801ATP-E	6 900	13 600
9,5 kW / A+	10,0 / A+	30 / 30	RAV-HM1101UTP-E	7 200	RAV-GV1101ATP-E	9 200	17 100
9,5 kW / A++	10,0 / A+	30 / 30	RAV-HM1101UTP-E	7 200	RAV-GV1101AT8P-E (3-f)	11 400	19 300
11,5 kW / A	11,9 / A	30 / 30	RAV-HM1401UTP-E	8 000	RAV-GV1401ATP-E	10 400	19 100
12,1 kW / -	12,3 / -	30 / 30	RAV-HM1401UTP-E	8 000	RAV-GV1401AT8P-E (3-f)	11 900	20 600
13,0 kW / -	13,5 / -	30 / 30	RAV-HM1601UTP-E	8 500	RAV-GV1601ATP-E	13 000	22 200
13,0 kW / -	13,5 / -	30 / 30	RAV-HM1601UTP-E	8 500	RAV-GV1601AT8P-E (3-f)	15 100	24 300

JEDNOSTKA KASETONOWA 840x840 (950x950) - DIGITAL INVERTER

> NOWA LINIA "DI" SERII 2

5,0 kW / A++	5,3 kW / A++	30 / 30	RAV-HM561UTP-E	5 900	RAV-GM562ATP-E	7 200	13 800
6,7 kW / A++	7,7 kW / A++	50 / 30	RAV-HM801UTP-E	6 000	RAV-GM802ATW-E	8 600	15 300
8,0 kW / A++	8,6 kW / A++	50 / 30	RAV-HM901UTP-E	6 600	RAV-GM902ATW-E	9 500	16 800
9,5 kW / A++	11,2 kW / A+	50 / 30	RAV-HM1101UTP-E	7 200	RAV-GM1102ATW-E	12 700	20 600
9,5 kW / A++	11,2 kW / A+	50 / 30	RAV-HM1101UTP-E	7 200	RAV-GM1102AT8W-E (3-f)	15 200	23 100
12,1 kW / -	13,0 kW / -	50 / 30	RAV-HM1401UTP-E	8 000	RAV-GM1402ATW-E	13 000	21 700
12,1 kW / -	13,0 kW / -	50 / 30	RAV-HM1401UTP-E	8 000	RAV-GM1402AT8W-E (3-f)	15 600	24 300
14,0 kW / -	16,0 kW / -	50 / 30	RAV-HM1601UTP-E	8 500	RAV-GM1602ATW-E	16 500	25 700
14,0 kW / -	16,0 kW / -	50 / 30	RAV-HM1601UTP-E	8 500	RAV-GM1602AT8W-E (3-f)	18 400	27 600

JEDNOSTKA KASETONOWA 840x840 (950x950) - SUPER DIGITAL INVERTER

5,0 kW / A++	5,6 kW / A++	50 / 30	RAV-HM561UTP-E	5 900	RAV-GP561ATW-E	8 600	15 200
7,1 kW / A+++	8,0 kW / A+++	50 / 30	RAV-HM801UTP-E	6 000	RAV-GP801ATW-E	11 300	18 000
10,0 kW / A+++	11,2 kW / A++	75 / 30	RAV-HM1101UTP-E	7 200	RAV-GP1101AT-E	17 100	25 000
10,0 kW / A++	11,2 kW / A+	75 / 30	RAV-HM1101UTP-E	7 200	RAV-GP1101AT8-E (3-f)	18 600	26 500
12,5 kW / -	14,0 kW / -	75 / 30	RAV-HM1401UTP-E	8 000	RAV-GP1401AT-E1	18 600	27 300
12,5 kW / -	14,0 kW / -	75 / 30	RAV-HM1401UTP-E	8 000	RAV-GP1401AT8-E (3-f)	19 200	27 900
14,0 kW / -	16,0 kW / -	75 / 30	RAV-HM1601UTP-E	8 500	RAV-GP1601AT8-E (3-f)	21 800	31 000

\*) Dostępność kaset 1.dr. - 3 kwartał 2023  
Ceny zestawów zawierają panel i sterownik przewodowy.  
Urządzenia zawierają fluorowe gazy cieplarniane (R32).

Wydajność i klasa energetyczna		Max. długość instalacji / przewyższenie [m]	Jednostka wewnętrzna		Jednostka zewnętrzna		Cena netto zestawu (j. wewn.+ zewn. + sterownik) PLN
Moc chłodnicza / Klasa ef. energet.	Moc grzewcza / Klasa ef. energet.		Model	Cena netto PLN	Model	Cena netto PLN	



### JEDNOSTKA KASETONOWA 575x575 (620x620) - DIGITAL INVERTER

> NOWA LINIA "DI" SERII 2

2,5 kW / A++	3,4 kW / A++	20 / 10	RAV-HM301MUT-E	6 800	RAV-GM302ATP-E	5 300	12 800
3,6 kW / A++	4,0 kW / A+	20 / 10	RAV-HM401MUT-E	6 900	RAV-GM402ATP-E	6 000	13 600
5,0 kW / A++	5,3 kW / A+	30 / 30	RAV-HM561MUT-E	7 100	RAV-GM562ATP-E	7 200	15 000

### JEDNOSTKA KASETONOWA 575x575 (620x620) - SUPER DIGITAL INVERTER

5,0 kW / A++	5,6 kW / A+	50 / 30	RAV-HM561MUT-E	7 100	RAV-GP561ATW-E <small>MADE IN POLAND</small>	8 600	16 400
--------------	-------------	---------	----------------	-------	--	-------	--------



### JEDNOSTKA KASETONOWA SMART 840x840 (950x950) - SUPER DIGITAL INVERTER

5,0 kW / A++	5,6 kW / A++	50 / 30	RAV-HM561UT-E	6 900	RAV-GP561ATW-E <small>MADE IN POLAND</small>	8 600	16 200
7,1 kW / A+++	8,0 kW / A+++	50 / 30	RAV-HM801UT-E	7 400	RAV-GP801ATW-E <small>MADE IN POLAND</small>	11 300	19 400
10,0 kW / A+++	11,2 kW / A++	75 / 30	RAV-HM1101UT-E	8 400	RAV-GP1101AT-E	17 100	26 200
12,5 kW / -	14,0 kW / -	75 / 30	RAV-HM1401UT-E	9 100	RAV-GP1401AT-E1	18 600	28 400



### JEDNOSTKA WOLNOSTOJĄCA - DIGITAL INVERTER

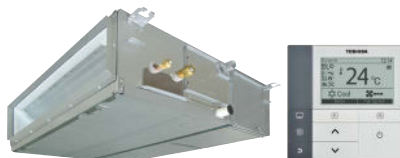
> NOWA LINIA "DI" SERII 2

5,0 kW / A+	5,3 kW / A+	30 / 30	RAV-HM561FT-E	11 500	RAV-GM562ATP-E	7 200	19 400
6,7 kW / A	7,7 kW / A+	50 / 30	RAV-HM801FT-E	12 500	RAV-GM802ATW-E <small>MADE IN POLAND</small>	8 600	21 800
8,0 kW / A++	8,6 kW / A+	50 / 30	RAV-HM901FT-E	12 500	RAV-GM902ATW-E <small>MADE IN POLAND</small>	9 500	22 700
9,5 kW / A++	11,2 kW / A	50 / 30	RAV-HM1101FT-E	13 000	RAV-GM1102ATW-E <small>MADE IN POLAND</small>	12 700	26 400
9,5 kW / A+	11,2 kW / A	50 / 30	RAV-HM1101FT-E	13 000	RAV-GM1102AT8W-E (3-f) <small>MADE IN POLAND</small>	15 200	28 900
12,1 kW / -	13,0 kW / -	50 / 30	RAV-HM1401FT-E	14 000	RAV-GM1402ATW-E <small>MADE IN POLAND</small>	13 000	27 700
12,1 kW / -	13,0 kW / -	50 / 30	RAV-HM1401FT-E	14 000	RAV-GM1402AT8W-E (3-f) <small>MADE IN POLAND</small>	15 600	30 300
14,0 kW / -	16,0 kW / -	50 / 30	RAV-HM1601FT-E	15 500	RAV-GM1602ATW-E <small>MADE IN POLAND</small>	16 500	32 700
14,0 kW / -	16,0 kW / -	50 / 30	RAV-HM1601FT-E	15 500	RAV-GM1602AT8W-E (3-f) <small>MADE IN POLAND</small>	18 400	34 600

### JEDNOSTKA WOLNOSTOJĄCA - SUPER DIGITAL INVERTER

5,0 kW / A+	5,6 kW / A+	50 / 30	RAV-HM561FT-E	11 500	RAV-GP561ATW-E <small>MADE IN POLAND</small>	8 600	20 800
7,1 kW / A++	8,0 kW / A+	50 / 30	RAV-HM801FT-E	12 500	RAV-GP801ATW-E <small>MADE IN POLAND</small>	11 300	24 500
10,0 kW / A++	11,2 kW / A+	50 / 30	RAV-HM1101FT-E	13 000	RAV-GP1101AT-E	17 100	30 800
10,0 kW / A++	11,2 kW / A+	50 / 30	RAV-HM1101FT-E	13 000	RAV-GP1101AT8-E (3-f)	18 600	32 300
12,3 kW / -	13,2 kW / -	75 / 30	RAV-HM1401FT-E	14 000	RAV-GP1401AT-E1	18 600	33 300
12,5 kW / -	14,0 kW / -	50 / 30	RAV-HM1401FT-E	14 000	RAV-GP1401AT8-E (3-f)	19 200	33 900
14,0 kW / -	16,0 kW / -	75 / 30	RAV-HM1601FT-E	15 500	RAV-GP1601AT8-E (3-f)	21 800	38 000

Wydajność i klasa energetyczna		Max. długość instalacji / przewyższenie [m]	Jednostka wewnętrzna		Jednostka zewnętrzna		Cena netto zestawu (j. wewn.+ zewn. + sterownik) PLN
Moc chłodnicza / Klasa ef. energet.	Moc grzewcza / Klasa ef. energet.		Model	Cena netto PLN	Model	Cena netto PLN	



### JEDNOSTKA KANAŁOWA - DIGITAL INVERTER CLASSIC

> NOWA LINIA "DIC" (CLASSIC)

6,7 kW / A	7,0 / A+	30 / 20	RAV-HM801BTP-E	5 100	RAV-GV801ATP-E	6 900	12 700
9,5 kW / A	10,0 / A	30 / 30	RAV-HM1101BTP-E	6 500	RAV-GV1101ATP-E	9 200	16 400
9,5 kW / A	10,0 / A	30 / 30	RAV-HM1101BTP-E	6 500	RAV-GV1101AT8P-E (3-f)	11 400	18 600
11,5 kW / A	11,9 / A	30 / 30	RAV-HM1401BTP-E	6 700	RAV-GV1401ATP-E	10 400	17 800
12,1 kW / -	12,3 / -	30 / 30	RAV-HM1401BTP-E	6 700	RAV-GV1401AT8P-E (3-f)	11 900	19 300
13,0 kW / -	13,5 / -	30 / 30	RAV-HM1601BTP-E	7 300	RAV-GV1601ATP-E	13 000	21 000
13,0 kW / -	13,5 / -	30 / 30	RAV-HM1601BTP-E	7 300	RAV-GV1601AT8P-E (3-f)	15 100	23 100



### JEDNOSTKA KANAŁOWA - DIGITAL INVERTER

> NOWA LINIA "DI" SERII 2

5,0 kW / A+	5,3 kW / A+	30 / 30	RAV-HM561BTP-E	4 550	RAV-GM562ATP-E	7 200	12 450
6,7 kW / A++	7,7 kW / A+	50 / 30	RAV-HM801BTP-E	5 100	RAV-GM802ATW-E <small>MADE IN POLAND</small>	8 600	14 400
8,0 kW / A++	8,6 kW / A+	50 / 30	RAV-HM901BTP-E	5 800	RAV-GM902ATW-E <small>MADE IN POLAND</small>	9 500	16 000
9,5 kW / A++	11,2 kW / A+	50 / 30	RAV-HM1101BTP-E	6 500	RAV-GM1102ATW-E <small>MADE IN POLAND</small>	12 700	19 900
9,5 kW / A+	11,2 kW / A	50 / 30	RAV-HM1101BTP-E	6 500	RAV-GM1102AT8W-E (3-f) <small>MADE IN POLAND</small>	15 200	22 400
12,1 kW / -	13,0 kW / -	50 / 30	RAV-HM1401BTP-E	6 700	RAV-GM1402ATW-E <small>MADE IN POLAND</small>	13 000	20 400
12,1 kW / -	13,0 kW / -	50 / 30	RAV-HM1401BTP-E	6 700	RAV-GM1402AT8W-E (3-f) <small>MADE IN POLAND</small>	15 600	23 000
14,0 kW / -	16,0 kW / -	50 / 30	RAV-HM1601BTP-E	7 300	RAV-GM1602ATW-E <small>MADE IN POLAND</small>	16 500	24 500
14,0 kW / -	16,0 kW / -	50 / 30	RAV-HM1601BTP-E	7 300	RAV-GM1602AT8W-E (3-f) <small>MADE IN POLAND</small>	18 400	26 400

### JEDNOSTKA KANAŁOWA - SUPER DIGITAL INVERTER

5,0 kW / A+	5,6 kW / A+	50 / 30	RAV-HM561BTP-E	4 550	RAV-GP561ATW-E <small>MADE IN POLAND</small>	8 600	13 850
7,1 kW / A++	8,0 kW / A++	50 / 30	RAV-HM801BTP-E	5 100	RAV-GP801ATW-E <small>MADE IN POLAND</small>	11 300	17 100
10,0 kW / A++	11,2 kW / A+	75 / 30	RAV-HM1101BTP-E	6 500	RAV-GP1101AT-E	17 100	24 300
10,0 kW / A+	11,2 kW / A+	75 / 30	RAV-HM1101BTP-E	6 500	RAV-GP1101AT8-E (3-f)	18 600	25 800
12,5 kW / -	14,0 kW / -	75 / 30	RAV-HM1401BTP-E	6 700	RAV-GP1401AT-E1	18 600	26 000
12,5 kW / -	14,0 kW / -	75 / 30	RAV-HM1401BTP-E	6 700	RAV-GP1401AT8-E (3-f)	19 200	26 600
14,0 kW / -	16,0 kW / -	75 / 30	RAV-HM1601BTP-E	7 300	RAV-GP1601AT8-E (3-f)	21 800	29 800



> NOWA LINIA "KANAŁOWA PŁASKA"

### JEDNOSTKA KANAŁOWA PŁASKA - DIGITAL INVERTER

> NOWA LINIA "DI" SERII 2

2,5 kW / A++	3,4 kW / A+	20 / 10	RAV-HM301SDTY-E	4 400	RAV-GM302ATP-E	5 300	10 400
3,6 kW / A+	4,0 kW / A+	20 / 10	RAV-HM401SDTY-E	4 600	RAV-GM402ATP-E	6 000	11 300
5,0 kW / A+	5,3 kW / A+	30 / 30	RAV-HM561SDTY-E	4 700	RAV-GM562ATP-E	7 200	12 600
6,7 / A+	7,7 / A+	50 / 30	RAV-HM801SDTY-E	5 500	RAV-GM802ATW-E <small>MADE IN POLAND</small>	8 600	14 800



### JEDNOSTKA KANAŁOWA PŁASKA - SUPER DIGITAL INVERTER

5,0 kW / A+	5,6 kW / A+	50 / 30	RAV-HM561SDTY-E	4 700	RAV-GP561ATW-E <small>MADE IN POLAND</small>	8 600	14 000
7,1 / A++	8,0 / A+	50 / 30	RAV-HM801SDTY-E	5 500	RAV-GP801ATW-E <small>MADE IN POLAND</small>	11 300	17 500



### JEDNOSTKA KANAŁOWA O PODWYŻSZONYM SPRĘŻU - BIG DIGITAL INVERTER

19,0 kW / (5,82)	22,4 kW / (3,78)	100 / 30	RAV-RM2241DTP-E2	19 000	RAV-GM2241AT8-E1 (3-f)	35 000	54 700
22,5 kW / (5,49)	27,0 kW / (3,69)	100 / 30	RAV-RM2801DTP-E2	20 000	RAV-GM2801AT8-E1 (3-f)	38 000	58 700

